

Museum Pass Program

Did you know....

The Simsbury Public Library provides passes for over 24 museums throughout Connecticut and Massachusetts? The passes provide either free or discounted admissions to:

- Connecticut State Parks
- Mystic Maritime Aquarium
- Zoo in Forest Park
- The Children's Museum
- The Golden Age of Trucking Museum
- Naismith Memorial Basketball Hall of Fame
- And more!

All of the museum passes are graciously donated by the Friends of the Simsbury Public Library.

Complete information about the museum pass program is available on our website (www.simsburylibrary.info). Just follow the Museum Pass link.

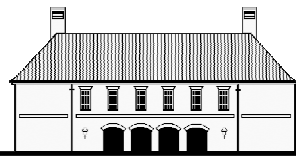
brought to you by:

the friends of the
Simsbury Public Library

How do I check out a Museum Pass?

If you have a current Adult Simsbury Library Card in good standing, you may reserve a museum pass by calling the Library Children's Room at 658-7663 (ext. 202). Or you may reserve a pass online by visiting the Simsbury Public Library website (www.simsburylibrary.info) and following the link for Museum passes. (Note: if reserving online, you will be prompted for your library card and PIN numbers. If you do not know the default PIN# or have forgotten your PIN#, please call the Library.)

Passes may be reserved up to two months in advance. Please call the museums for current hours of operation. Passes should be picked up and returned to the Children's Room.



THE SIMSBURY PUBLIC LIBRARY

www.simsburylibrary.info

860.658.7663

Hours: Monday-Thursday 9-9
Friday 9-5
Saturday 9-5 (Sept-June)
Sunday 9-1 (Sept-June)
Saturday 9-1 (July-Sept)
Sunday Closed (July-Sept)

The following museums are NOT participants of the Simsbury Public Library Museum Pass Program, but also provide FREE admissions. Check with each museum for details.

Ballard Institute and Museum of Puppetry
UConn - Storrs, CT www.bimp.uconn.edu

Barker Cartoon Museum
Cheshire, CT www.barkermuseum.com

Bartlett Arboretum
Stamford, CT www.bartlettarboretum.org

Connecticut College Arboretum
New London, CT www.arboretum.conncoll.edu

Connecticut State Museum of Natural History & Archeology Center
Storrs, CT www.mnh.uconn.edu

Davison Art Center -Wesleyan University
Middletown, CT www.wesleyan.edu/dac/home.html

Flanders Nature Center
Woodbury, CT www.flandersnaturecenter.org

Knights of Columbus Museum
New Haven, CT www.kofc.org

Museum of Connecticut History
Hartford, CT www.cslib.org

National Helicopter Museum
Stratford, CT www.nationalhelicoptermuseum.org

Nautilus and Submarine Force Museum
Groton, CT www.usnautilus.org

New Britain Youth Museum
New Britain, CT www.newbritainyouthmuseum.org

New England Civil War Museum
Vernon, CT <http://pages.ctime.net/ne.civilwar.mus>

Soundwaters Environmental Education Center
Stamford, CT www.soundwaters.org

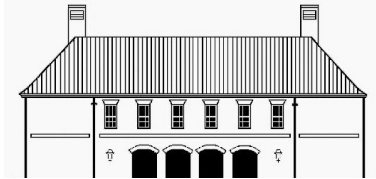
The Trash Museum
Hartford, CT www.crra.org

Weir Farm & Burlingham House Visitor Center
Wilton, CT www.nps.gov/wefa

White Memorial Conservation Center
Litchfield, CT www.whitememorialcc.org

William Benton Museum of Art
Storrs, CT www.benton.uconn.edu

Yale Center for British Art
New Haven, CT www.yale.edu/ycba



Simsbury Public Library



**Check Out
a
Museum**

@your library™

Museums

(Available to Simsbury Library card holders with a pass.)

The Children's Museum

West Hartford, CT 860-231-2824

www.thechildrensmuseumct.org

(Formerly the Science Center of Connecticut.) A hands-on museum exploring science, nature, and technology. Wildlife sanctuary, marine-life touch tank and computer lab. Includes access to the Roaring Brook Nature Center. *Pass admits one child free with every paid adult admission.*

*Connecticut State Museums

www.cultureandtourism.org

One pass gives you admission to 4 wonderful museums. *Pass admits 2 adults and 2 children.*

Old New-Gate Prison & Copper Mine

East Granby, CT 860-653-3563

Learn about one of the first commercial mines in the British Colonies. The mine was later used as a prison. Tour the former prison and learn more about this important part of your local history.

Prudence Crandall Museum

Canterbury, CT 860-546-7800

Learn how the courage of our State's female hero, Miss Crandall, contributed to Civil Rights history with the passing and repeal of the "Black Law". Visit period rooms and changing exhibits in this museum.

Sloane Stanley Museum

Kent, CT 860-927-3849

See the collections of artist, author and illustrator, Eric Sloane. Sloane built an extensive collection of hand tools which is displayed in a building gifted to our State by the CT based, Stanley Works. Visit the pioneer cabin & other interesting artifacts on the property.

Henry Whitfield State Museum

Guilford, CT 203-453-2457

www.whitfieldmuseum.com

Henry Whitfield's house, built in 1639, is the oldest house in Connecticut and is the oldest stone house in New England. The "Old Stone House", Connecticut's first state museum (1899) has 3 floors filled with 17th -19th century furnishings. Visit the exhibits, galleries and research library.

*Connecticut State Parks and Forest Pass

www.ct.gov/dep

Come join in the fun at the 137 Connecticut State Parks and Forest Recreation Areas. Be a part of the "No Child Left Inside" program which includes activities and prizes. *The pass is good for one private passenger vehicle carrying fewer than 12 passengers. The State Parks and Forest Recreation Areas Pass is valid from 8 am to sunset daily Memorial Day to Labor Day.*

*Connecticut Trolley Museum

East Windsor, CT 860-627-6540

www.ceraonline.org

Hear old-time whistles blow and brass bells ring as an antique streetcar carries you on a three-mile round trip through New England countryside. *Pass admits 2 adults and 4 children under the age of 13.*

*Eric Carle Museum of Picture Book Art

Amherst, MA 413-658-1100

www.picturebookart.com

A collection and presentation of picture book art by noted author and artist Eric Carle as well as others from around the world. See exhibitions of original art and create your own masterpiece in the Art Studio. *Pass admits 2 adults and up to 4 children.*

*Florence Griswold Museum

Old Lyme, CT 860-434-5542

www.flogris.org

The Florence Griswold Museum is the home of the Old Lyme Art Colony, America's best known center of Impressionist painting. *Pass admits 2 adults. Pass cannot be used in December.*

*Golden Age of Trucking Museum

Middlebury, CT 203-577-2181

www.goldenagetruckmuseum.com

Explore the history of American truck transportation. See classic trucks, visit the children's interactive area, art gallery, movies and more. *Pass is valid for \$5 off the admission price. One discount pass/family.*

*Hill-Stead Museum

Farmington, CT 860-677-4787

www.hillstead.org

A beautifully restored home with an outstanding collection of French and American Impressionist Art. *Pass admits 2 adults and any children under the age of 18.*

*Lutz Children's Museum

Manchester, CT 860-643-0949

www.lutzmuseum.org

A hands-on museum designed for pre-school through elementary school ages. Come and experience the historical and scientific artifacts, kid friendly exhibits, live animal exhibits, and more. *Pass admits 1 family.*

Maritime Aquarium of Norwalk

Norwalk, CT 860-493-6411

www.maritimeaquarium.org

Explore the marine life and maritime culture of Long Island Sound. *Pass gives up to 6 persons a discount admission price.*

The Mark Twain House

Hartford, CT 860-493-6411

www.marktwainhouse.org

The beautifully restored home of the famous writer, Mark Twain. *Pass admits one adult or 2 children free with the purchase of an adult admission. Call for tour times.*

Mashantucket Pequot Museum and Research Center

Mashantucket, CT 800-441-9671

www.pequotmuseum.org

The Museum has interactive exhibits, a life-size replica of 17th century Pequot village, a restaurant, and museum store. Pass gives discounted admission to 2 adults and 2 children.

Mystic Marinelife Aquarium

Mystic, CT 860-572-5955

www.mysticaquarium.org

Features 24 exhibits and nearly 4,000 specimens representing the world's oceans. *Pass offers discount admission to 2 adults and 2 children. Pass cannot be used in July or August.*

Naismith Memorial Basketball Hall of Fame

Springfield, MA 877-4HOOPLA

www.hoophall.com

This 48,000-square-foot museum has three levels of exhibits on the history and heroes of the game and gives visitors a chance to participate in skill contests. *Pass gives discounted admission for both adults and children.*

*New Britain Museum of American Art

New Britain, CT 860-229-0257

www.nbmaa.org

The New Britain Museum of American Art features three centuries of great American Art. *Pass admits 4 adults.*

*New England Air Museum

Windsor Locks, CT 860-623-3305

www.neam.org

Come to the New England Air Museum and travel through the history of aviation. Tour the two huge display hangers and see more than 70 aircraft. *Pass admits 2 adults and 2 children.*

*Norman Rockwell Museum

Stockbridge, MA 413-298-4100

www.normanrockwellmuseum.org

Visit the museum to enjoy Norman Rockwell's original paintings. He was a chronicler of his time who created works of universal and enduring appeal. *Pass admits 4.*

Peabody Museum of Natural History

New Haven CT 203-423-5050

www.peabody.yale.edu

The museum is known for the Great Hall of Dinosaurs as well as dioramas of animals that walk the earth today. *Pass gives discounted admission for up to 4 people.*

*Phelps Tavern Museum & Homestead

Simsbury, CT 860-658-2500

www.phelpstavernmuseum.com

Three generations of tavern keeping along the college highway. See period gardens and historic buildings. *Pass admits 2 adults and 2 children or 1 adult and 3 children during regular hours.*

*Wadsworth Atheneum Museum of Art

Hartford, CT 860-278-2670

www.wadsworthatheneum.org

America's oldest continuously operating public art museum. Collection spans 5,000 years of art history, from ancient Greek and Roman bronzes to 20th Century masterpieces. *Pass admits 2 adults and 2 children.*

*The Zoo in Forest Park

Springfield, MA 413-733-2251

www.forestparkzoo.org

See rare livestock breeds in the New England Heritage Breeds Exhibit, native wildlife and animals from distant lands. Enjoy the beautiful gardens and take a train ride around the park in the environmentally friendly train. *Pass admits 4 people.*

*** free admission with pass**